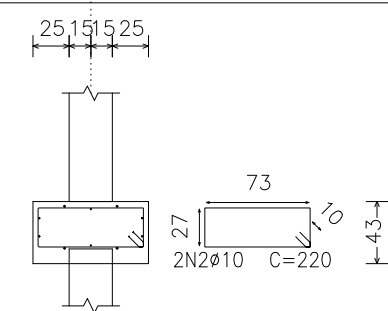
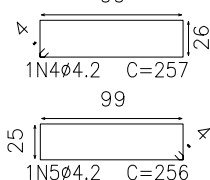


(P1, P2, P3, P10, P13, P14, P17, P18, P19, P20, P21, P22 e P23)



30 16 104 30 25 11 4.2 79



Escala 1:75

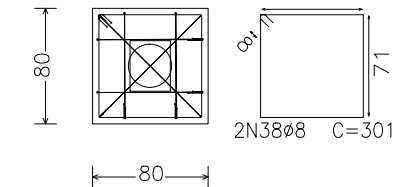
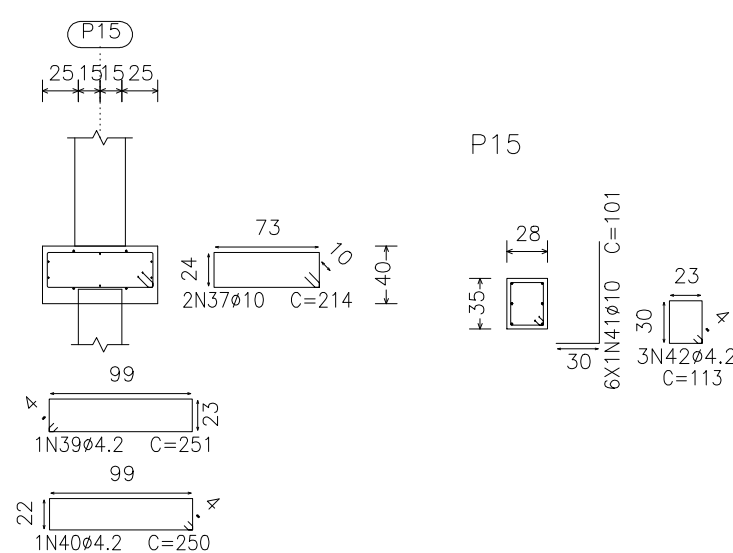
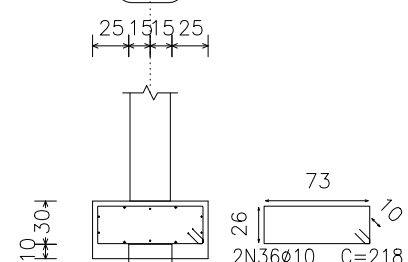
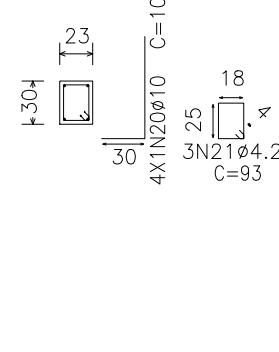
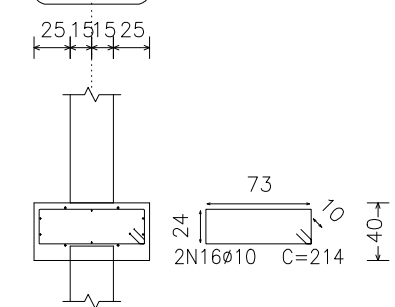
Escala 1:75

Technical drawing of a rectangular plate. The overall dimensions are 20 (height) and 12 (width). There is a central rectangular hole with dimensions 15 (height) and 7 (width). The hole is offset from the top and bottom edges by 2.5 units each. The hole is also offset from the left and right edges by 2.5 units each. The hole has a fillet radius of R5. The plate has a thickness of 5 units. The drawing includes a top view and a side view.

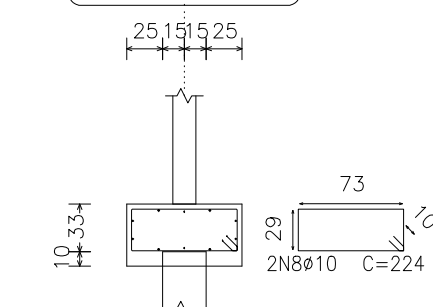
12x20

2Ø10.0 C=acima ate 2,00m
Ø5c/15

(P5 e P11)



P4, P6, P8, P9 e P16

[illegible]